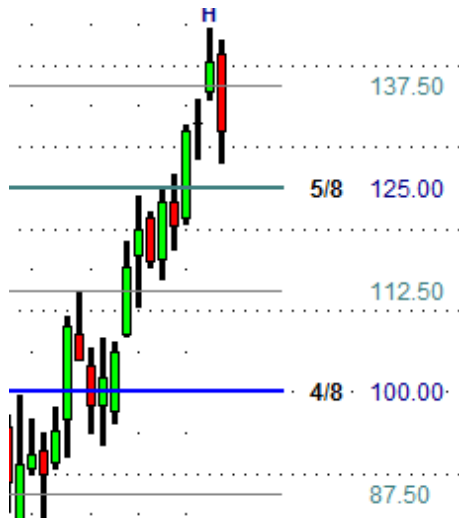


26May08 Horseman Analysis

Horseman analysis is pointing to lower equity markets. With most stocks still over sold, and looking to go lower before hitting any Fibonacci support. Banking looks like it is about to break down into new lows



RIMM

Instrument: RIMM
View: Bearish
Key Levels: 137.5, 112.5,
Strategy: Sell limit @ 137.5, Target = 112.5



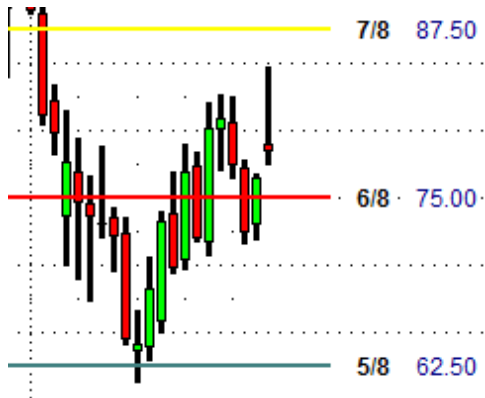
GOOG

Instrument: Goog
View: Bearish
Key Levels: 600, 562.5, 500
Strategy: Sell limit @ 562.5, Target = 500



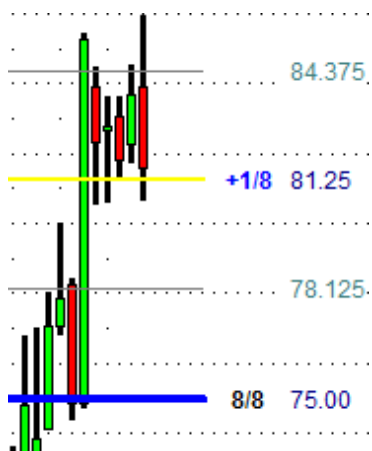
AAPL

Instrument: aapl
 View: Bearish
 Key Levels: 187.5, 150, 125
 Strategy: Sell limit @ 187.5, Target = 150



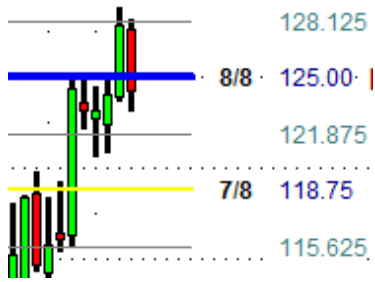
AMZN

Instrument: amzn
 View: Sideways
 Key Levels: 87.5, 75.00
 Strategy: No Trade



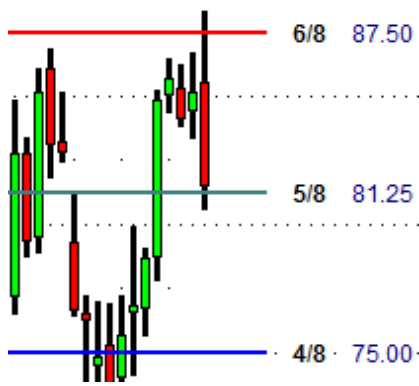
CAT

Instrument: CAT
 View: Bearish
 Key Levels: 84.37, 81.25, 78.12, 75.00
 Strategy: Sell limit @ 84.37, Target = 75.00



Instrument: IBM
 View: Bearish
 Key Levels: 128.12, 125, 118.75, 115.62
 Strategy: Sell limit @ 128.12, Target = 115.62

IBM



Instrument: BA
 View: Bullish
 Key Levels: 81.25, 84.37, 87.5
 Strategy: Buy limit @ 81.25, Target = 87.50

BA



Instrument: BAC
 View: Bearish
 Key Levels: 37.5, 31.25
 Strategy: Sell limit @ 37.5, Target = 31.25

BAC